

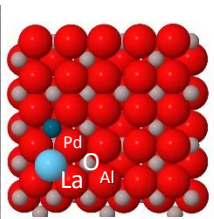
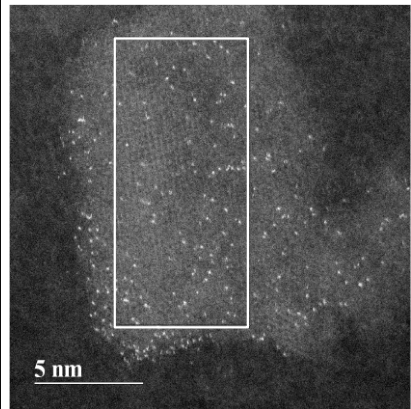


# Current Research Projects

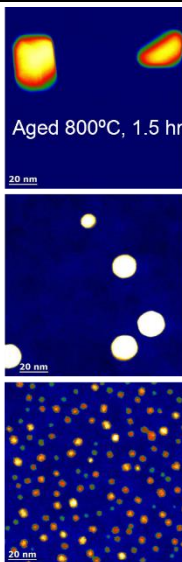
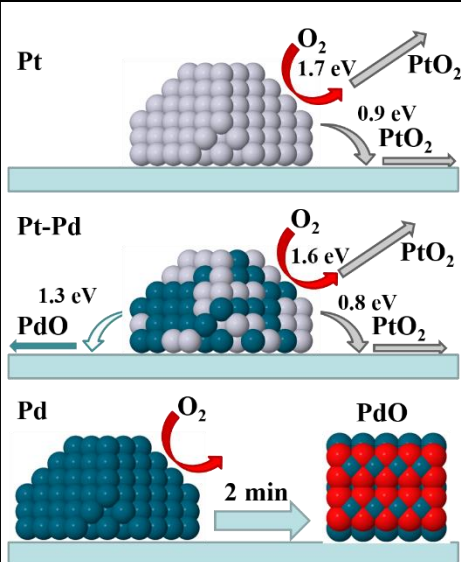
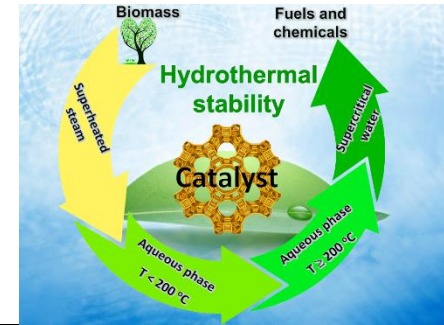
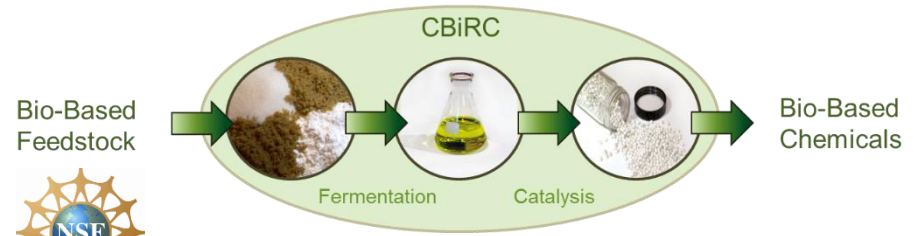
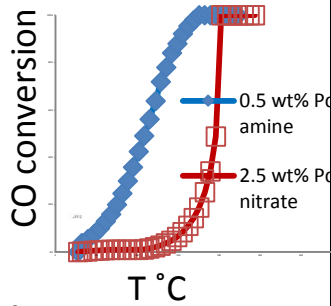
Abhaya K. Datye

- NSF/REU (since 1995)
- NSF/RED FACETS (since 2016)

## Characterization and Reactivity of sub-nanometer clusters



Pd single atoms on alumina



Adatom emission from nanoparticles – implications for Ostwald Ripening

NSF-GOALI



Center for Innovative and Strategic Transformation of Alkane Resources

[www.cistar.us](http://www.cistar.us)



- Modular Rural Plants
- Jobs
- \$20 Billion Per Year Injected into Economy
- Responsible Use of Shale