



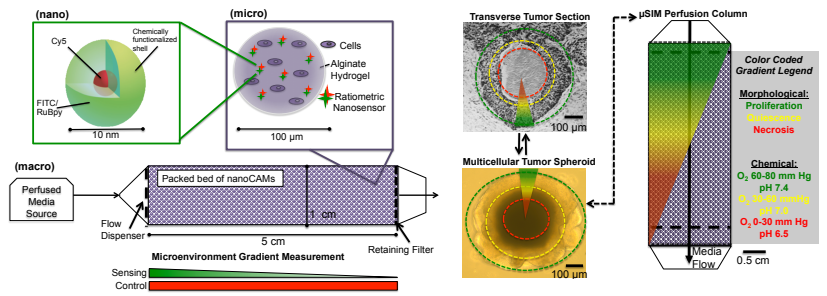
Andrew P. Shreve



*Chemical and Biological Engineering Department
Center for Biomedical Engineering*

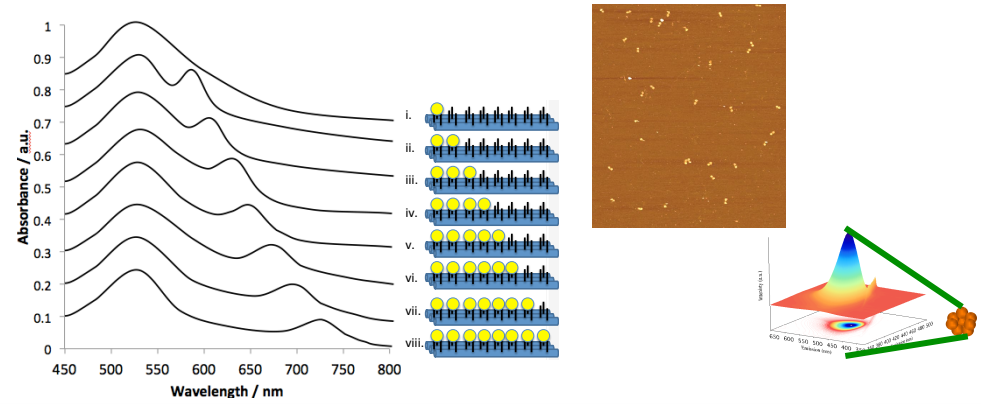
Chemical Microenvironment and 3D Tissue Models

(with **J. De Lora**, J. Freyer, V. Cristini)



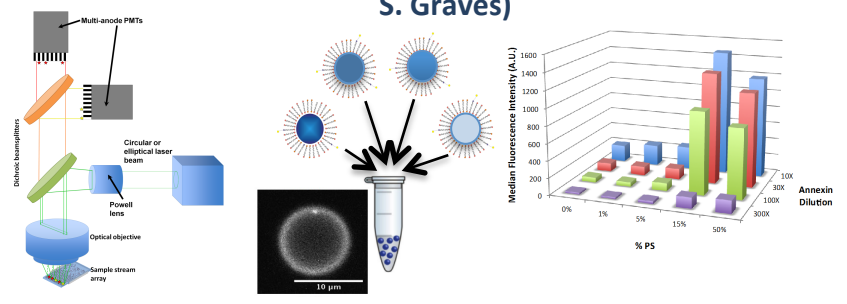
DNA-Based Photonic Material Assembly

(with **M. Zubelewicz**, S. Graves, R. Polsky (SNL), J. Martinez (LANL))



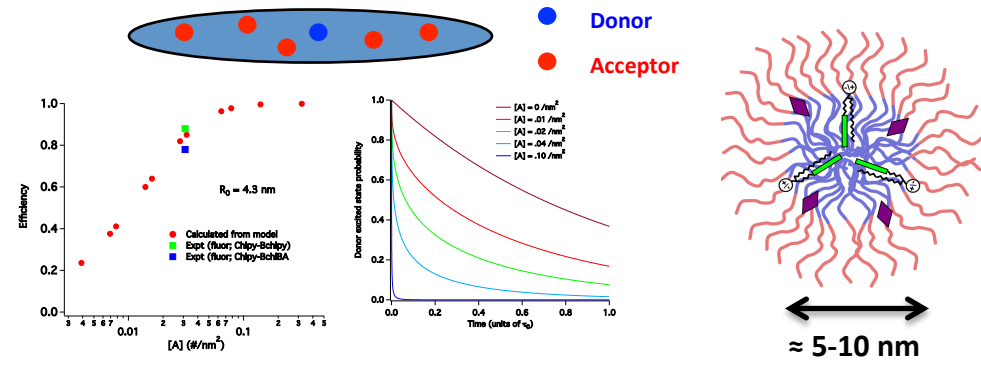
Optical and Material Systems for Multiplexed Flow-Based Analysis

(with **J. Juarez**, **N. Zurek**, **N. Fernandez-Oropeza**, **J. Fetzer**, **S. Graves**)



Energy Transfer Experiments and Modeling

(with **V. Subramanian**, **N. Zurek**, D. Evans, G. Montaño (LANL))



Selected Education and Outreach: Faculty mentor for multiple graduate programs (Chemical Engineering, Biomedical Engineering, Nanoscience and Microsystems, Optical Sciences and Engineering, Biomedical Sciences); Co-lead (with D. Lidke, Pathology) on submitted NIH T-32 training grant for Cancer Nanotechnology Training Center renewal; Member of Impact of Materials On Society Sub-Committee of Materials Research Society.